

Titan IP54

Type	Downlight
Mounting	Recessed
Material	Aluminium
Adjustable	No
El. class / IP	Class III / IP54
El. class driver	Class II



Warranty: see p.348

Bridgelux Vero 10 LED (350mA)

CCT	2700K / 3000K / 4000K
CRI	Ra90 (Ra80 on request)
SDCM	3
Luminous Flux LED	2700K - Ra90: 1100lm (124lm/W) 3000K - Ra90: 1156lm (130lm/W) 4000K - Ra90: 1172lm (132lm/W)
Luminous Flux System	2700K - Ra90: 937lm (92lm/W) 3000K - Ra90: 984lm (96lm/W) 4000K - Ra90: 998lm (98lm/W)
Beam angle	28° / 40°
LED Power	8.9W / 350mA (excl. driver)
System Power	10.2W / 350mA (incl. driver)
Forward voltage	23V (min.) - 25.5V (typ.) - 28V (max.)

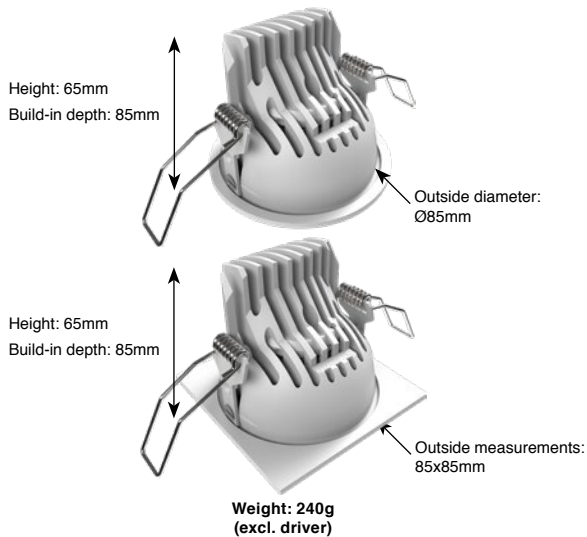
Bridgelux Dim-to-warm LED (more info see p.330)

CCT	Dim-to-warm 1800-3000K
CRI	Ra90
Luminous Flux LED	860lm - System: 732lm
LED Power	8.2W / 250mA (excl. driver)
System Power	9.4W / 250mA (incl. driver)

DIM TO WARM



- Ø Boobytrap springs: 76-80mm
- Ø Trapezium springs: 79-80mm



- Driver:**
- Included in article number and included in price
 - External/Remote installation

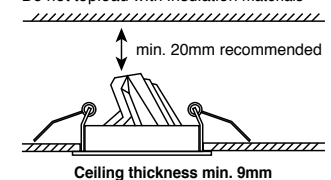
Data sheets and wiring guide: see website
Driver information: see p.334-335

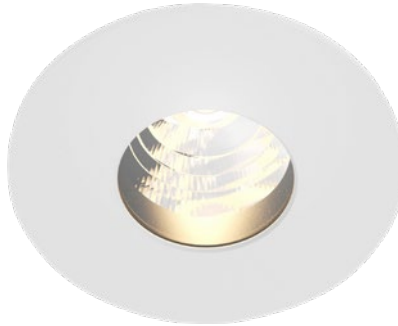
On Request

LED with CRI Ra97
Class A LED

Air circulation notice:

Do not toplod with insulation materials





Titan IP54

Round

PRICES INCL. DRIVERS

Non dim (Driver 490.24.16 incl.)

2700K - Ra90 - 10.2W - 937lm	1015.AA.24.927.XX-Y
3000K - Ra90 - 10.2W - 984lm	1015.AA.24.930.XX-Y
4000K - Ra90 - 10.2W - 998lm	1015.AA.24.940.XX-Y

1-10V dim & Push dim (Driver 490.25.20 incl.)

2700K - Ra90 - 10.2W - 937lm	1015.AA.25.927.XX-Y
3000K - Ra90 - 10.2W - 984lm	1015.AA.25.930.XX-Y
4000K - Ra90 - 10.2W - 998lm	1015.AA.25.940.XX-Y

DALI dim (Driver 490.26.20 incl.)

2700K - Ra90 - 10.2W - 937lm	1015.AA.26.927.XX-Y
3000K - Ra90 - 10.2W - 984lm	1015.AA.26.930.XX-Y
4000K - Ra90 - 10.2W - 998lm	1015.AA.26.940.XX-Y

Mains dim (Driver 490.27.20 incl.)

2700K - Ra90 - 10.2W - 937lm	1015.AA.27.927.XX-Y
3000K - Ra90 - 10.2W - 984lm	1015.AA.27.930.XX-Y
4000K - Ra90 - 10.2W - 998lm	1015.AA.27.940.XX-Y

DALI dim / Dim to Warm 1800-3000K (Driver 490.26.20 incl.)

DTW (DALI dim) - 9.4W - 732lm	1015.AA.26.dtw.XX-Y
-------------------------------	---------------------

Mains dim / Dim to Warm 1800-3000K (Driver 497.27.20 incl.)

DTW (mains dim) - 9.4W - 732lm	1015.AA.27.dtw.XX-Y
--------------------------------	---------------------

Trapezium springs: 0000.00.00.000.00-**T**
 Boobytrap springs: 0000.00.00.000.00-**B**



TRAPEZIUM SPRINGS



BOOBYTRAP SPRINGS

01



White Matt Text.
Standard

18



Grey Matt Text.
Standard

07



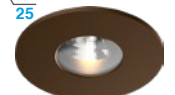
Anthracite Matt Text.
Standard

03



Black Matt Text.
Standard

25



Smoked Brown Text.
Standard



Titan IP54

Square

PRICES INCL. DRIVERS

Non dim (Driver 490.24.16 incl.)

2700K - Ra90 - 10.2W - 937lm	1014.AA.24.927.XX-Y
3000K - Ra90 - 10.2W - 984lm	1014.AA.24.930.XX-Y
4000K - Ra90 - 10.2W - 998lm	1014.AA.24.940.XX-Y

1-10V dim & Push dim (Driver 490.25.20 incl.)

2700K - Ra90 - 10.2W - 937lm	1014.AA.25.927.XX-Y
3000K - Ra90 - 10.2W - 984lm	1014.AA.25.930.XX-Y
4000K - Ra90 - 10.2W - 998lm	1014.AA.25.940.XX-Y

DALI dim (Driver 490.26.20 incl.)

2700K - Ra90 - 10.2W - 937lm	1014.AA.26.927.XX-Y
3000K - Ra90 - 10.2W - 984lm	1014.AA.26.930.XX-Y
4000K - Ra90 - 10.2W - 998lm	1014.AA.26.940.XX-Y

Mains dim (Driver 490.27.20 incl.)

2700K - Ra90 - 10.2W - 937lm	1014.AA.27.927.XX-Y
3000K - Ra90 - 10.2W - 984lm	1014.AA.27.930.XX-Y
4000K - Ra90 - 10.2W - 998lm	1014.AA.27.940.XX-Y

DALI dim / Dim to Warm 1800-3000K (Driver 490.26.20 incl.)

DTW (DALI dim) - 9.4W - 732lm	1014.AA.26.dtw.XX-Y
-------------------------------	---------------------

Mains dim / Dim to Warm 1800-3000K (Driver 497.27.20 incl.)

DTW (mains dim) - 9.4W - 732lm	1014.AA.27.dtw.XX-Y
--------------------------------	---------------------

28° Reflector: 0000.28.00.000.00-0
 40° Reflector: 0000.40.00.000.00-0

Available colors: 0000.00.00.000.XX-0
 Other RAL colors on request